

The reliable cutter for signage, displays and packaging sample production

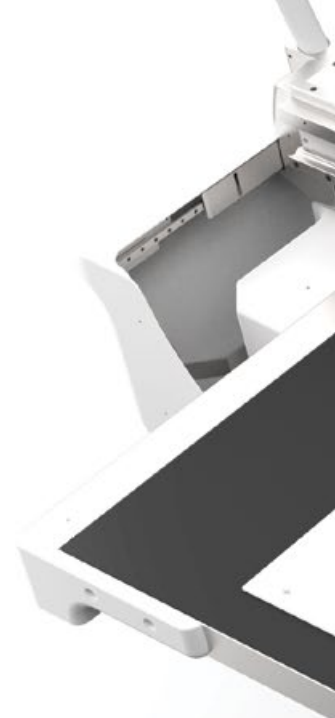
The Kongsberg V Series



Finishing with the industry's most reliable table

The Kongsberg V is a cutting table that stands for value, durability, reliability, precision and ease of use at an attractive investment level.

The Kongsberg V cutters come in standard configurations for sample making, signage and display production. The Kongsberg V offers a broad selection of tools, providing quality results on a wide range of cutting, creasing, and plotting tasks. No matter what application, the Kongsberg V brings the value you are looking for.



Rack-and-pinion drive system: Kongsberg's rack and pinion drive system support balances raw power and the finest axis control. The result is speed, durability and strength.



Tool exchange: Exchanging different tools is quick, tool-free and error-free because every insert is identified by a unique bar code.



Ease of operation: The Kongsberg V user interface guarantees swift and safe production.



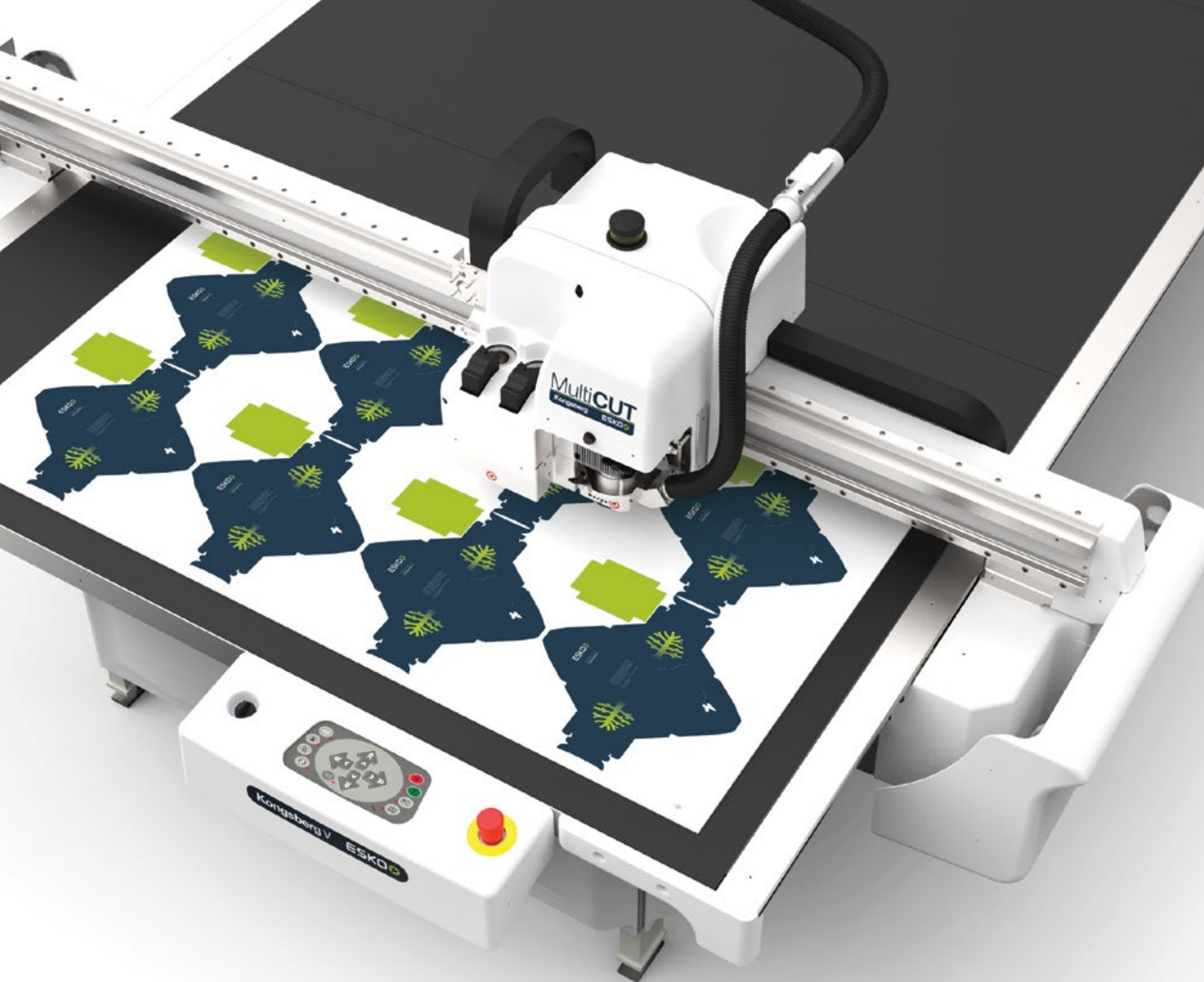
Tool inserts: Insert knife tools are available for cutting all relevant materials ranging from thin paper to synthetic sheets through heavy-duty packaging and display material. The tooling selection also includes creasing, plotting and drilling tools.



Table Mapping: Dynamic table mapping provides real-time updates to the exact field conditions. Precise automatic z-control during finishing means less damage to the underlay.



Sandwich steel construction: The Kongsberg V series features the famous, rock-solid Kongsberg table-top construction that will never warp or go out of level, even after decades of heavy use. Most Kongsberg cutting tables — thousands of them — are still in operation today.



i-cut Vision Pro camera: The camera system ensures highly efficient production along with simple and extremely accurate print-to-cut registration, even with print-distorted materials (available on the Sign & Display configuration.)

Choose your Kongsberg V table

There are two kinds of Kongsberg V tables, each with their own strengths and range of applications.

Kongsberg V for packaging sample making



The Kongsberg V for packaging is a cutting table configured for sample making, short run production of mockups and other packaging specific applications. This table is outfitted with a FlexiHead.

The FlexiHead offers highly accurate, powerful cutting on all flexible and thin materials such as paper, folding carton, vinyl, textile and more.

The FlexiHead is attached to a very precise servo axis controlling the tool depth when cutting, creasing and routing. Three configurable tool stations accommodate a full range of standard tool inserts.



Kongsberg V for signage and display production

The Kongsberg V for signage and displays comes with a MultiCUT tool head offering milling productivity and a camera system.

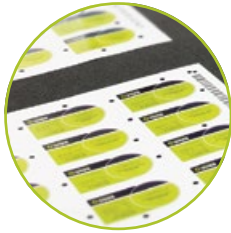
The MultiCUT combines all the tool insert options with a milling spindle up to 45.000 RPM. It's perfect for a wide range of signage materials. The air-cooled milling bit assures edge quality during high-speed milling of acrylics and other synthetics. The switch-operated bit exchange eliminates the need for hand tools.

The camera system and innovative front-end software make it the perfect entry level solution for signage production.



Producing on a wide range of materials

In a world that comes with rapid technology and business changes, it is important to invest in equipment is ready for any challenges that come your way. Choose a cutting table that handles the widest range of materials and applications.



Folding carton

Samples from all grades of folding carton.

Powerful function to generate sample counters based on integration with ArtiosCAD



Fluted Core Board

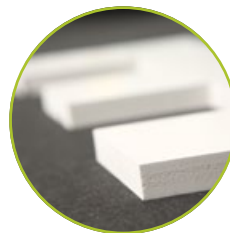
Furniture
POP displays



Corrugated board

Short-run of boxes on demand

Sample boxes
POP displays
Wooden box replacements



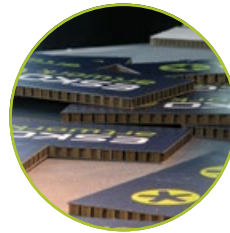
Foam board

Signs and posters
Display
Models of buildings...



Solid Board

Specialty packaging
gift packaging



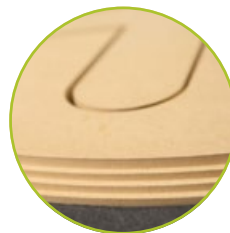
Honeycomb

Pallets
Displays
Protective packaging



ACM*

Displays
Advertising items
Signs
Boxes



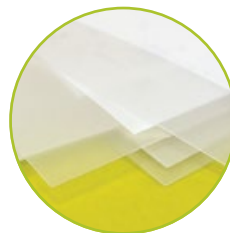
MDF**

Displays
Furniture
Sign & Display



Acrylic

Engraving
Additional furniture
Trophy
Sign making
Front panels



Plastics

Boxes for presents and cosmetics
Document folders
Rain covers and sun shading
Credit cards
Lights boxes/Pop up



Adhesives/Vinyls

Labels (Short runs)
Vinyls for banners, cars, shops
Sign making



Corrugated plastic

Boxes
Displays



Carpet

Carpets with different forms or logos
combining colors
Personalized shapes



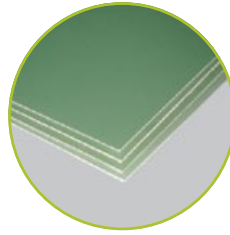
Wood

Displays
Furniture
Sign & Display



Paper

Envelopes
Exhibitors lining
Box lining



Fiberglass

Sign
Special constructions
Modelling



Varnish blankets

Optional register bar for pin registered blankets, ensuring perfect match with printing press.



Thin aluminium

Displays
Signmaking



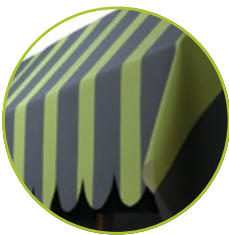
Flexo plates

Cut the flexo plates with or without bevel
Staggered cut



Rubber

Die rubber (no drying time required)
Mouse mats
Complements for shoes
Magnetic foil



Textile

Banners
Flags
Advertising items



Veneer

Furniture
Sign making



Gaskets

Gaskets for cars, pumps, liquids...



Other Materials

Please contact us for performance test

*aluminum composite material

**medium-density fiberboard

	V20	V24
Kongsberg V for Packaging		
Work area, all tools	1680 x 1270 mm / 66 x 50 In.	1680 x 3050 mm / 66 x 120 In.
Max. material size	1750 x 1620 mm / 69 x 64 In.	1750 x 3420 mm / 69 x 135 In.
Kongsberg V for Sign and Display		
Work area, all tools	1618 x 1270 mm / 63,7 x 50 In.	1618 x 3050 mm / 63.7 x 120 In.
Max. material size	1750 x 1620 mm / 69 x 64 In.	1750 x 3420 mm / 69 x 135 In.
Overall dimensions w/ front panel	2250 x 1980 mm 89 x 78 In.	2250 x 3720 mm 89 x 146 In.
Weight	405 kg / 890 lbs	580 kg / 1276 lbs
Position accuracy*	+/-200 um - +/-,0078"	+200 um - +/-,0078"
Repeatability	+/-50 um - +/-,0019"	+50um - +/-,0019"
Max. speed	30 m/min 20 IPS	
Max. acceleration	0,3 G	
Vertical tool force	220 N	
No. of vacuum sections	1	1
Standard traverse clearance**	50 mm / 2"	
Operator safety	Included is the DynaGuard Safety System, which protects the operator and bystanders from potential machine hazards. The movable parts of the machine (traverse, carriage) are surrounded by a set of photocell sensors that, if activated, will immediately stop the machine and wait for the operator to resume operation. If the end of the traverse hits a bystander the photocell beam goes out of position and operation is stopped.	
*Applies across total work area.		
**Measured without cutting underlay. Max. cutting thickness is tool dependent.		

Esko
Kortrijksesteenweg 1095
9051 Gent
Belgium
Tel. +32 9 216 92 11
info.eur@esko.com

Esko
8535 Gander Creek Drive
Miamisburg, OH 45342
USA
Tel. +1 937 454 1721
info.usa@esko.com

Esko
Rua Professor Aprigio Gonzaga, nº 78
11º andar - Conjunto 113/114
04303-000 - São Paulo
Brasil
Tel. +55 11 5078 1311
info.la@esko.com

Esko
8 Changi Business Park Ave 1
UE BizHub East #07-51
South Tower
Singapore 486018
Tel. +65 6420 0399
info.asp@esko.com

Esko
Shinjuku i-Land Tower 7F
5-1 Nishishinjuku 6-Chome,
Shinjuku-ku Tokyo,
Japan 163-1307
Tel. +81 3 5909 7631
info.japan@esko.com

Esko
Floor 1, #2 Building,
1528 Gu Mei Road
200233 Shanghai
China
Tel. +86 21 60576565
info.china@esko.com