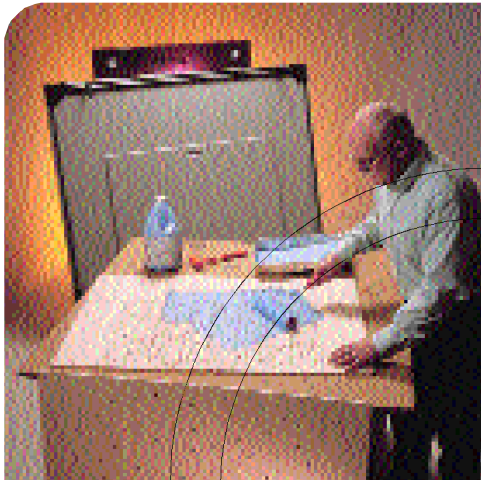


# Gerber Profile

Press24™  
Press48™



SPECIFICATIONS

The clamping pressure of the **Profile Press**, in combination with the **high performance** adhesive **BlueBond**, **permanently joins** two plywood layers together, producing a dieboard that is **exceptionally flat, strong and stable**.

The Profile Press comes in 2 sizes, and can accommodate single or multiple dieboards at the same time.



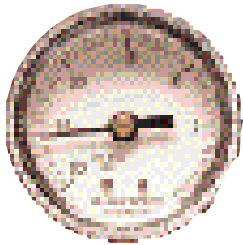
**GERBER INNOVATIONS**

*A Division of Gerber Scientific, Inc.*

CHANGING THE RULES IN DIEMAKING.

# Profile

# Press Specifications



Vacuum Gauge



On-Off Timer



Profile Press24

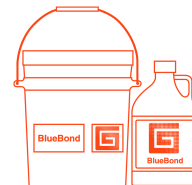
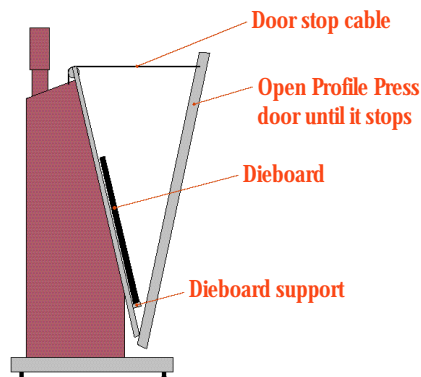
## Profile Press24

Maximum Dieboard Size	57" wide x 42" high 1447.8 mm x 1066.8 mm
Press Size	63" long x 25" wide x 62" high 1600.2 mm x 635 mm x 1574.8 mm
Weight	294 lbs. 133.5 kg
Electrical Requirements	115 V, 60 Hz, 5.4 Amps
Working Vacuum Pressure	26 Hg tons of clamping force

## Profile Press48

Maximum Dieboard Size	96" wide x 51.5" high 2438.4 mm x 1308 mm
Press Size	104" long x 25" wide x 66" high 2641.6 mm x 635 mm x 1676.4 mm
Weight	425 lbs. 192.95 kg
Electrical Requirements	120 V, 60 Hz, 13 Amps
Working Vacuum Pressure	25 Hg tons of clamping force

## P A T E N T S P E N D I N G



Gerber BlueBond™ high performance adhesive sets in 10 minutes\*, and the dieboard can be knifed immediately. Non-toxic water-based.

(see website for MSDS information)  
[www.gerberinnovations.com](http://www.gerberinnovations.com)

\*For very large dieboard applications, a slower drying adhesive is recommended to facilitate assembly—please contact Gerber Innovations for information